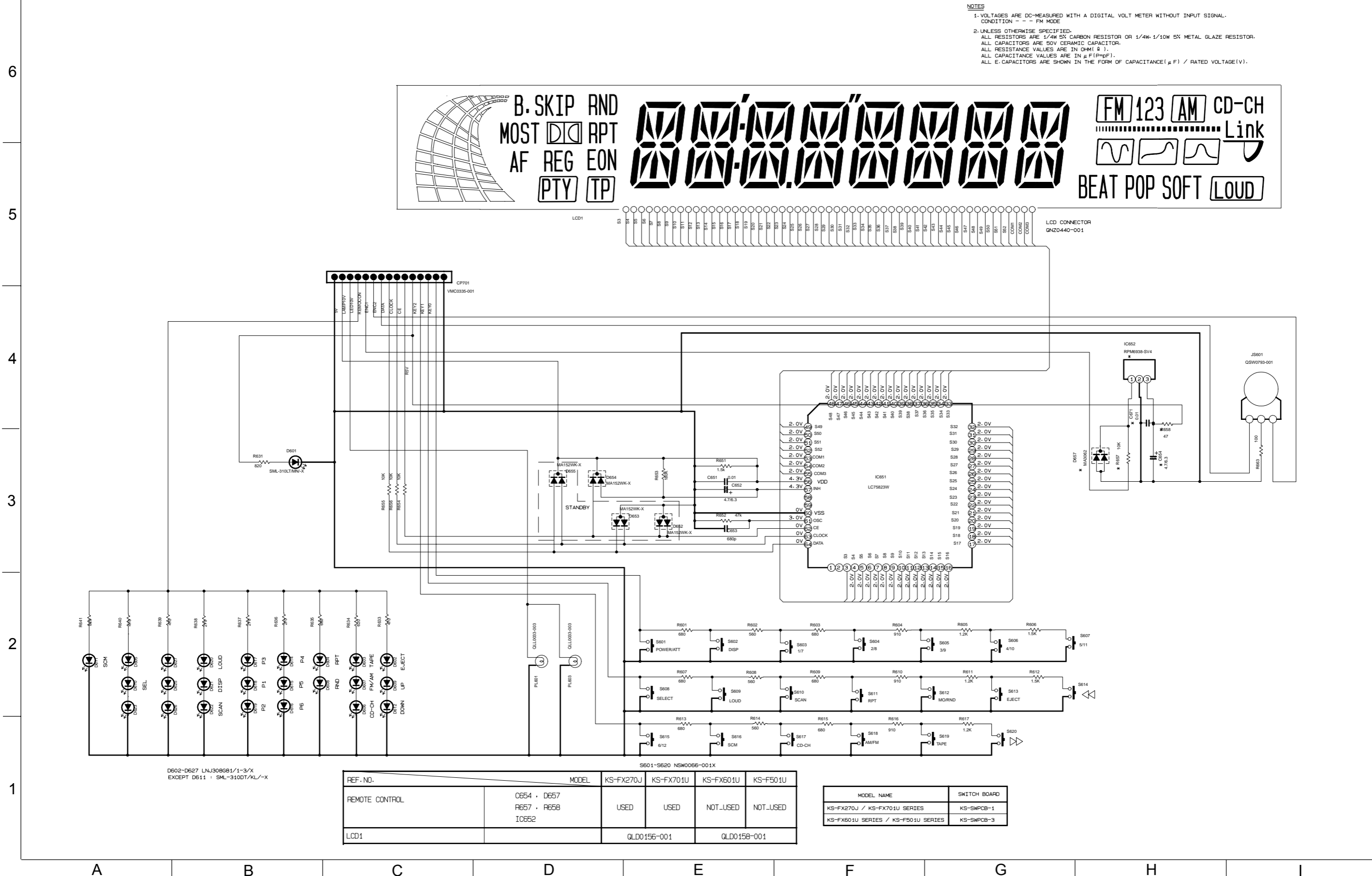


< M E M O >

■ LCD & Key control section

- NOTES
1. VOLTAGES ARE DC-MEASURED WITH A DIGITAL VOLT METER WITHOUT INPUT SIGNAL.
CONDITION - - - FM MODE
 2. UNLESS OTHERWISE SPECIFIED:
ALL RESISTORS ARE 1/4W 5% CARBON RESISTOR OR 1/4W 1/10W 5% METAL GLAZE RESISTOR.
ALL CAPACITORS ARE 50V CERAMIC CAPACITOR.
ALL RESISTANCE VALUES ARE IN OHM (Ω).
ALL CAPACITANCE VALUES ARE IN μF (PF).
ALL E-CAPACITORS ARE SHOWN IN THE FORM OF CAPACITANCE(μF) / RATED VOLTAGE(V).

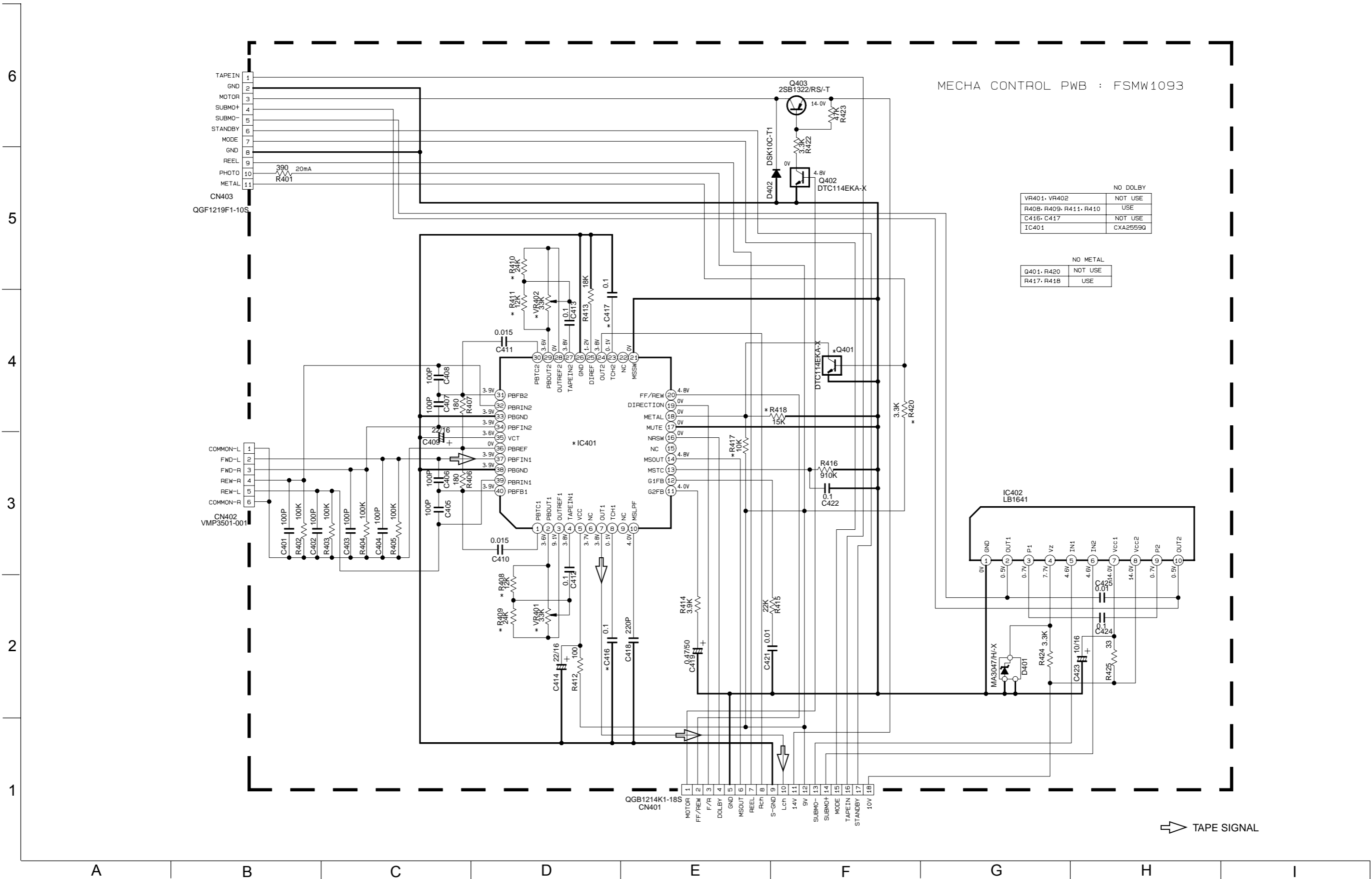


D602-D627 LNJ308681/1-3/X
EXCEPT D611 : SML-310DT/KL/-X

REF. NO.	MODEL	KS-FX270J	KS-FX701U	KS-FX601U	KS-F501U
REMOTE CONTROL	C654 · D657 R657 · R658 IC652	USED	USED	NOT_USED	NOT_USED
LCD1		QLD0156-001		QLD0158-001	

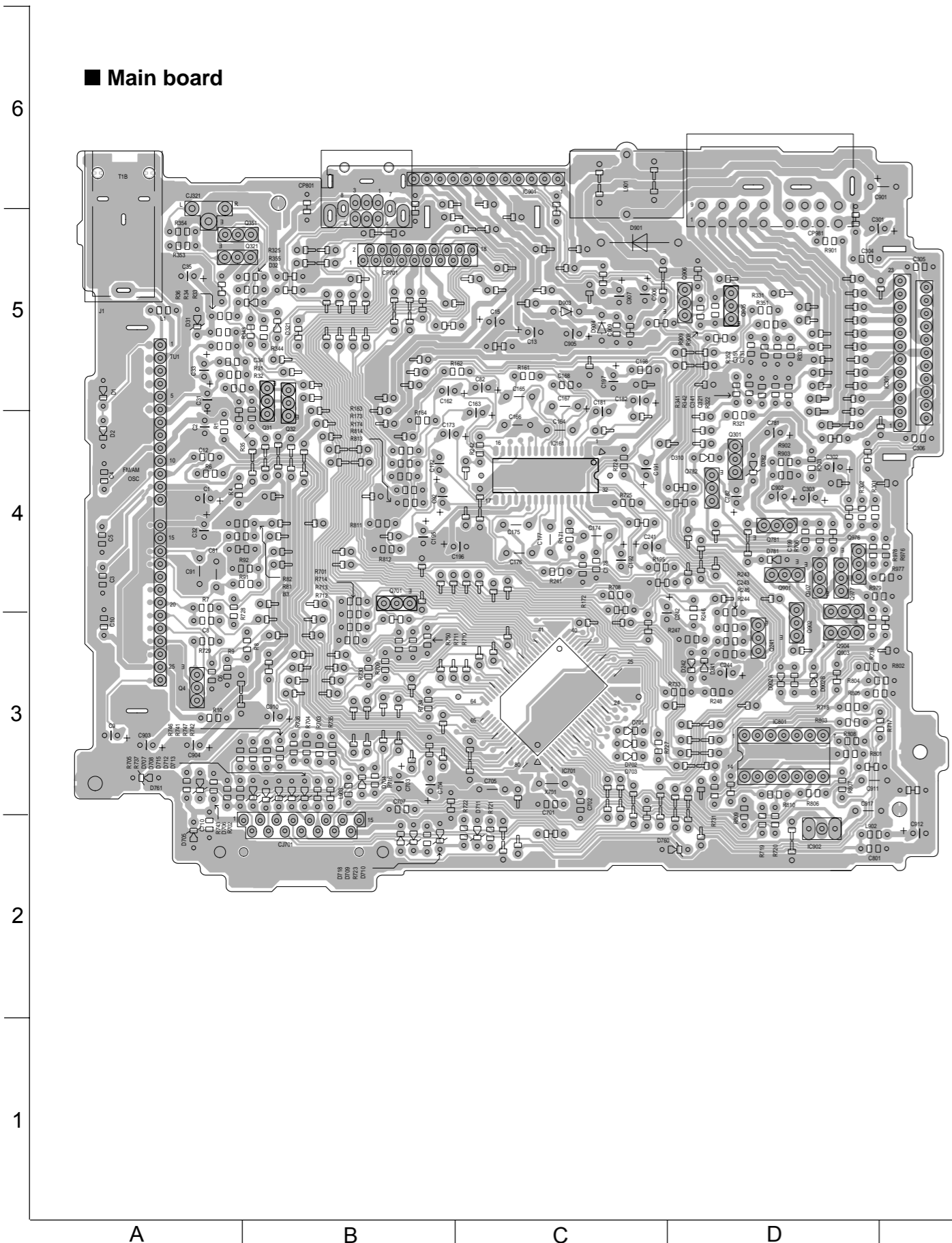
MODEL NAME	SWITCH BOARD
KS-FX270J / KS-FX701U SERIES	KS-SWPCB-1
KS-FX601U SERIES / KS-F501U SERIES	KS-SWPCB-3

■ Mechanism control section

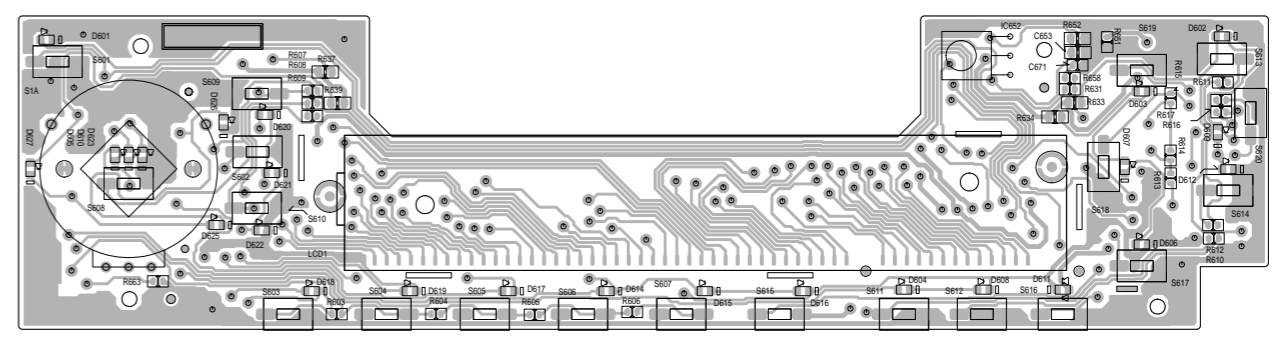


⇨ TAPE SIGNAL

Printed circuit boards



■ Front board (Foward side)



■ Front board (Reverse side)

